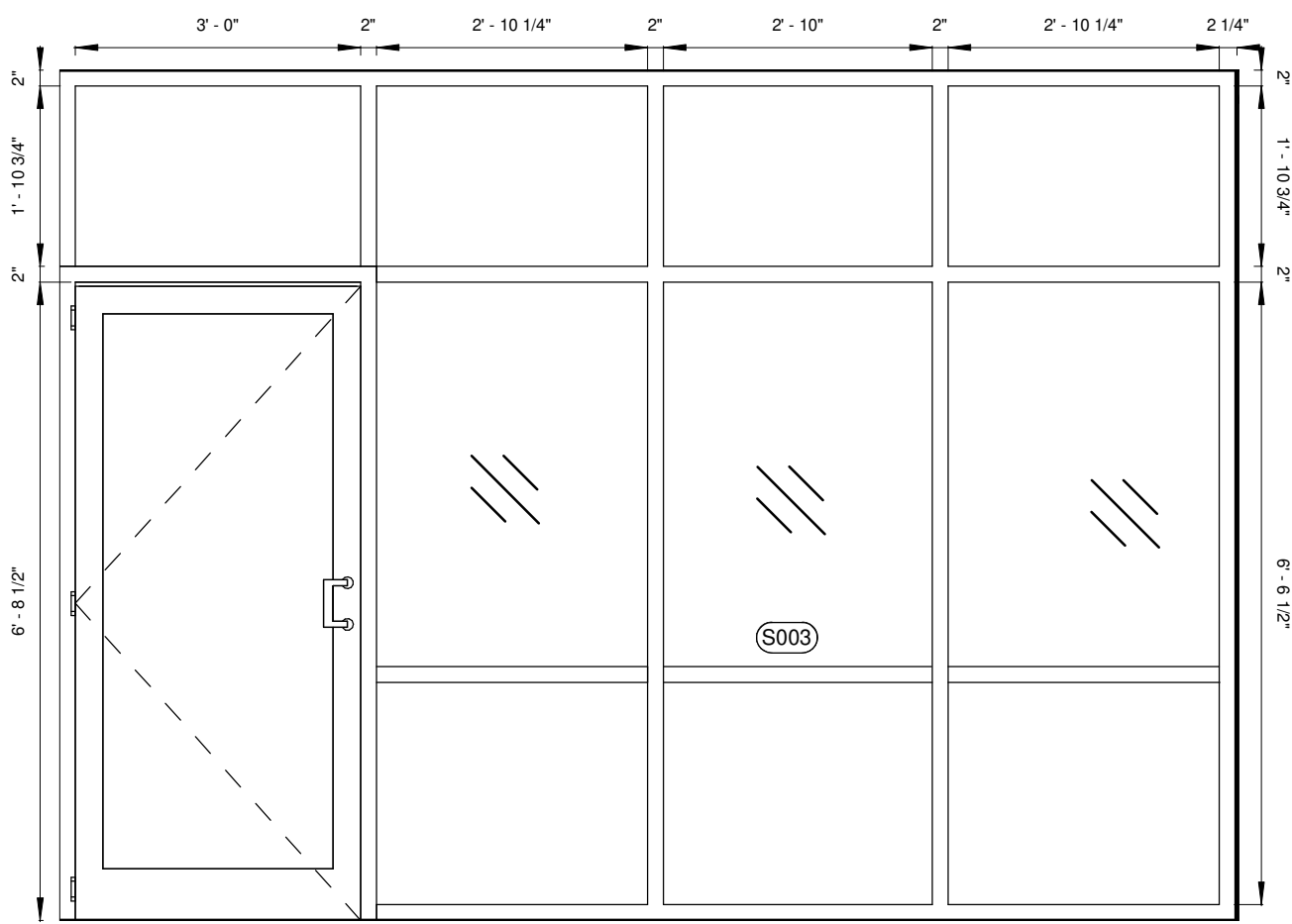


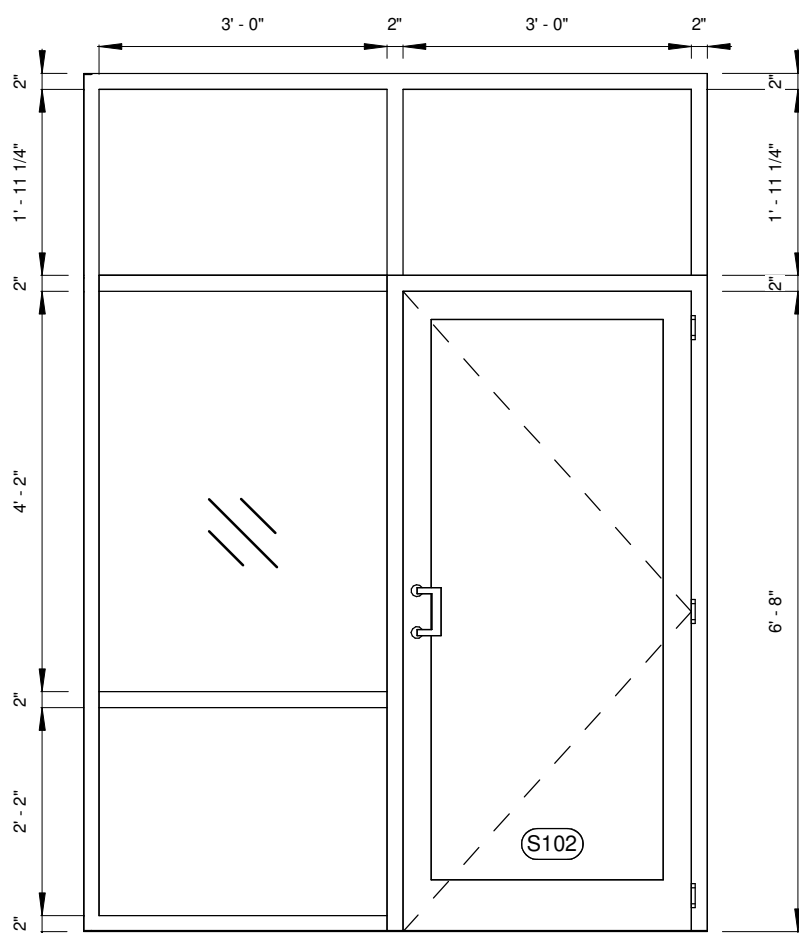
Interior Framed Glass Partition

1 S002 Elevation  
1/2" = 1'-0"



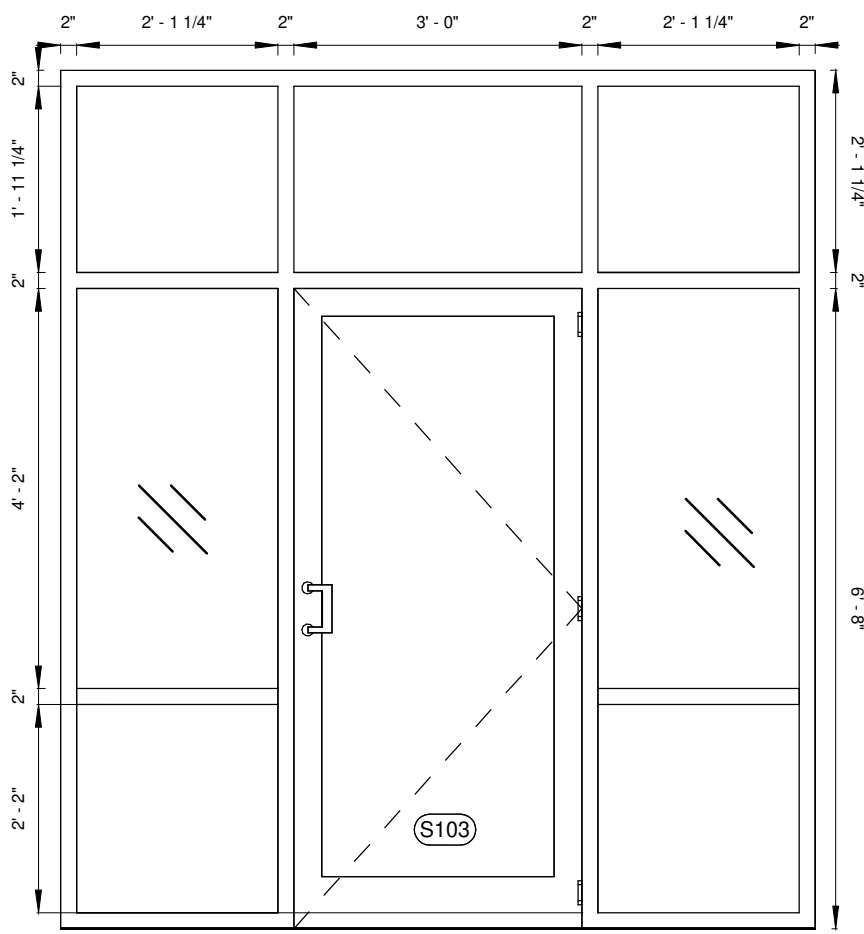
Interior Framed Glass Partition

2 S003 Elevation  
1/2" = 1'-0"



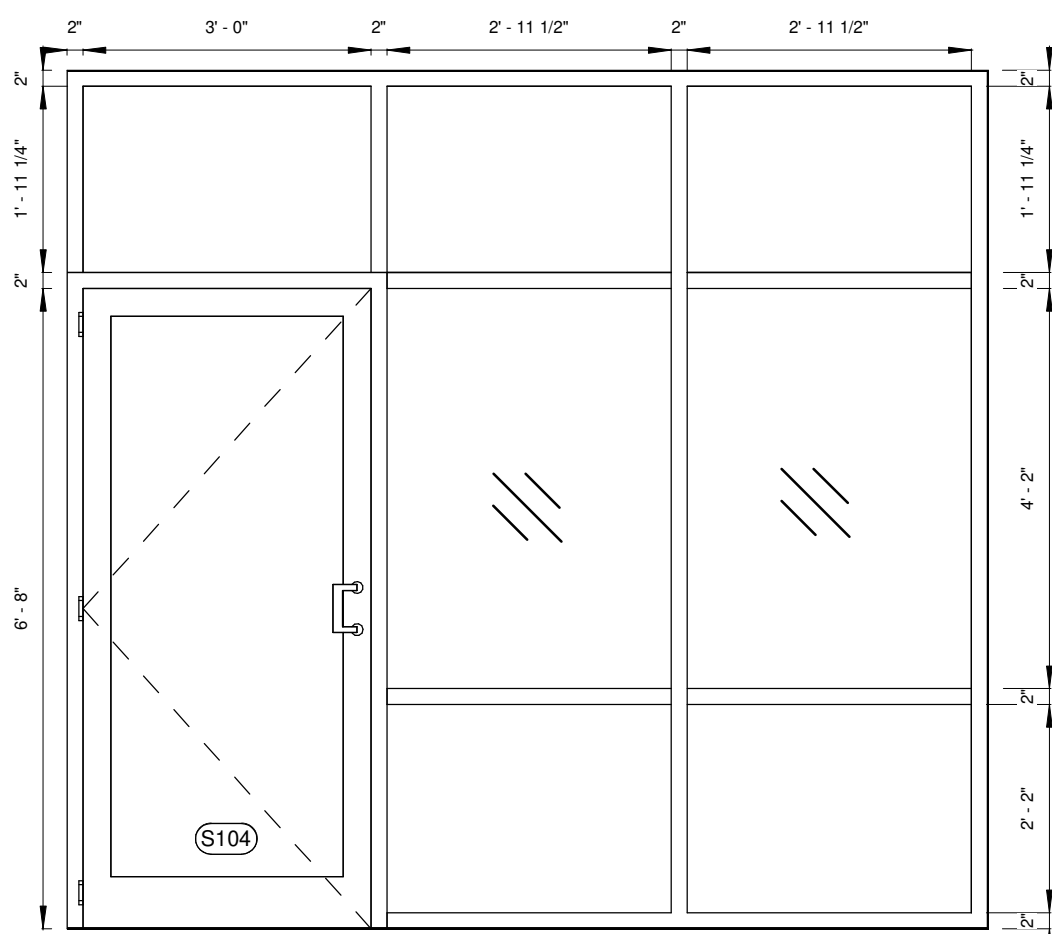
Interior Framed Glass Partition

3 S102 Elevation  
1/2" = 1'-0"



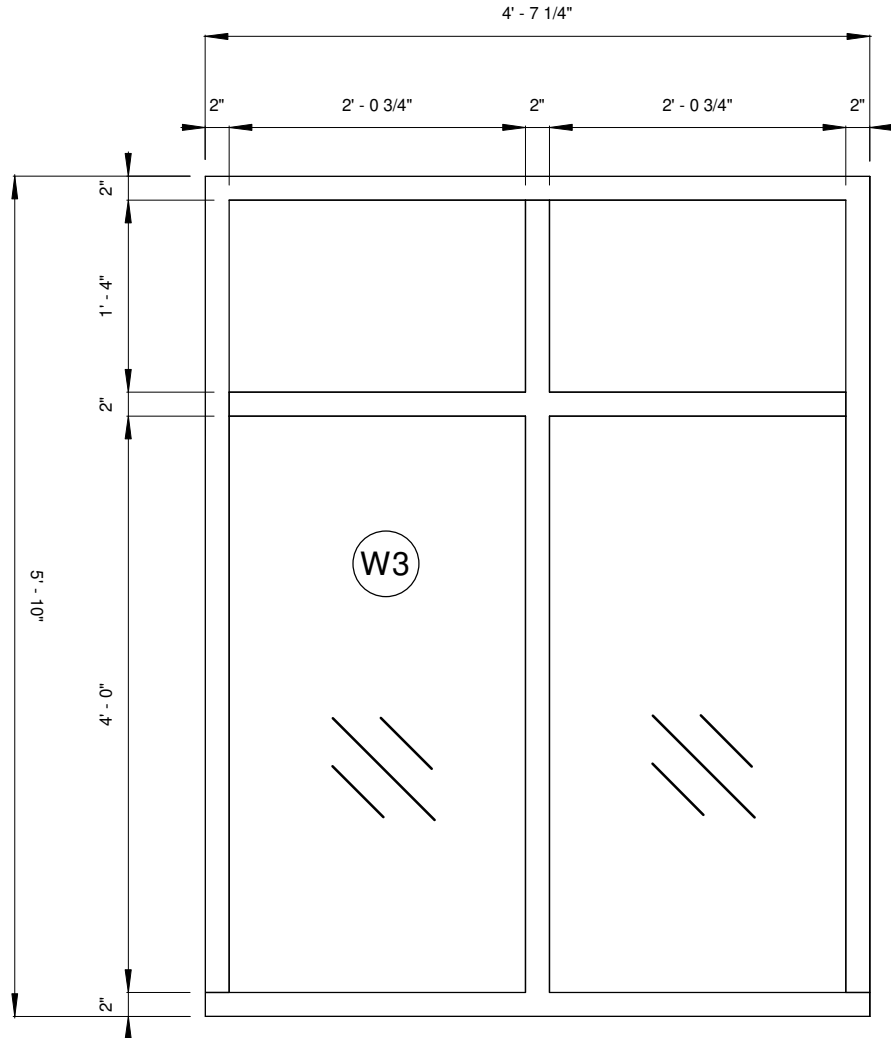
Interior Framed Glass Partition

4 S103 Elevation  
1/2" = 1'-0"



Interior Framed Glass Partition

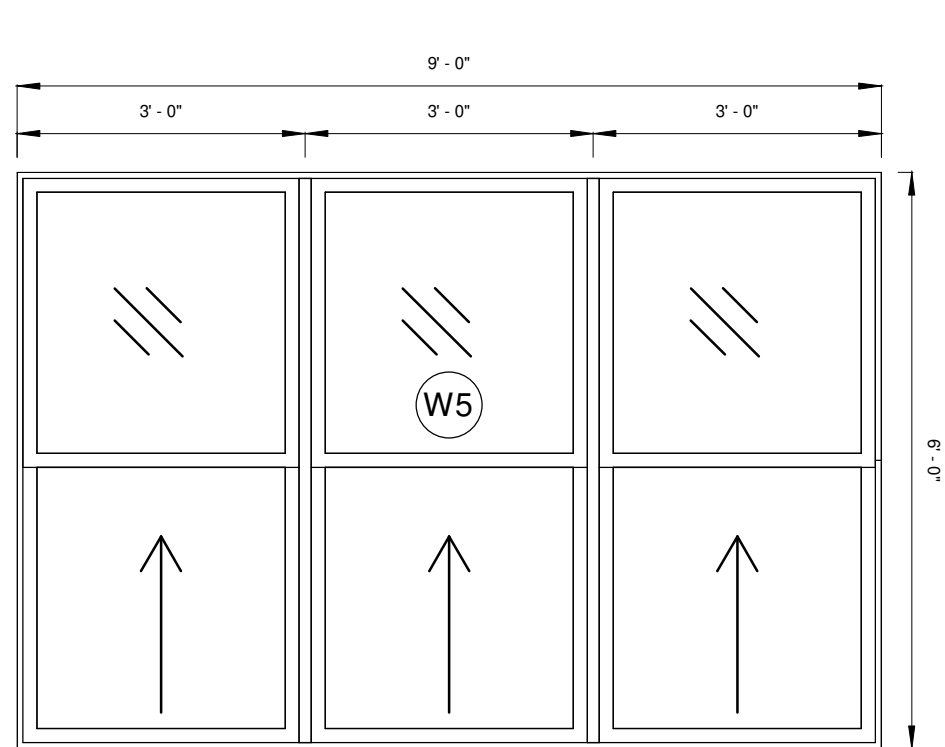
5 S104 Elevation  
1/2" = 1'-0"



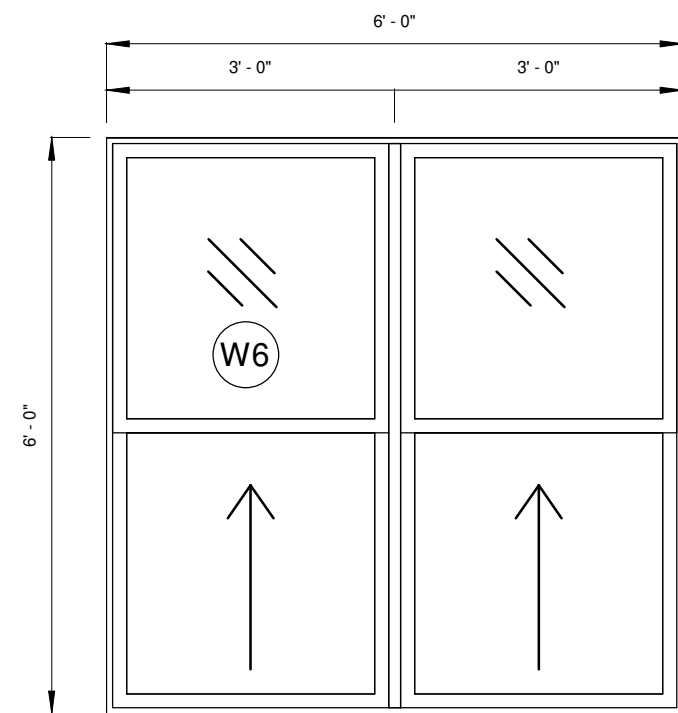
6 W3 Interior Glass Partition  
3/4" = 1'-0"

Notes:  
Use Kawneer "InFrame" interior framed glass partitioning system (or similar) with 2"X6" aluminum framing as detailed in these drawings. Finish with a factory applied fluoropolymer painted finish with a standard color to be selected by the Architect. Frames to be center glazed with clear non-thermal 1/4" glass with square glass stops. Use glazed interior doors to match,with hardware including: C0-9 door pulls, Std. butt hinges,Std. 4" threshold & LCN 1260 door closers,all to be installed as shown in the door schedules and elevations.

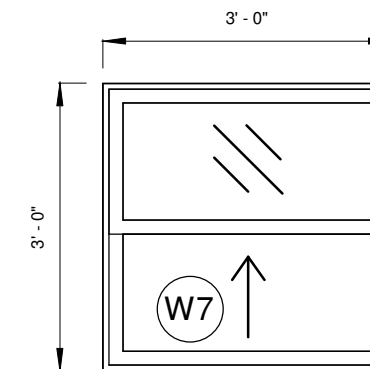
Window Schedule						
Type Mark	Count	Width	# of Units	Height	Description	Comments
W1	1	6' - 0"	2	8' - 8"	Impact Resistant Storefronts	
W1	1	6' - 0"	2	8' - 8"	Impact Resistant Storefronts	
W1	1	6' - 0"	2	8' - 8"	Impact Resistant Storefronts	
W1	1	6' - 0"	2	8' - 8"	Impact Resistant Storefronts	
W1	1	6' - 0"	2	8' - 8"	Impact Resistant Storefronts	
W1	1	6' - 0"	2	8' - 8"	Impact Resistant Storefronts	
W1	1	6' - 0"	2	8' - 8"	Impact Resistant Storefronts	
W1	1	6' - 0"	2	8' - 8"	Impact Resistant Storefronts	
W2	1	9' - 0"	3	8' - 8"	Impact Resistant Storefronts	
W2	1	9' - 0"	3	8' - 8"	Impact Resistant Storefronts	
W2	1	9' - 0"	3	8' - 8"	Impact Resistant Storefronts	
W3	1	4' - 7 1/2"	2	5' - 10"	Interior Glass Partition	
W4	1	9' - 0"	3	8' - 4"	Impact Resistant Storefronts	
W4	1	9' - 0"	3	8' - 4"	Impact Resistant Storefronts	
W5	1	9' - 0"	3	6' - 0"	Tripple, Single Hung Window	
W5	1	9' - 0"	3	6' - 0"	Tripple, Single Hung Window	
W5	1	9' - 0"	3	6' - 0"	Tripple, Single Hung Window	
W5	1	9' - 0"	3	6' - 0"	Tripple, Single Hung Window	
W6	1	6' - 0"	2	6' - 0"	Double, Single Hung Window	
W6	1	6' - 0"	2	6' - 0"	Double, Single Hung Window	
W6	1	6' - 0"	2	6' - 0"	Double, Single Hung Window	
W6	1	6' - 0"	2	6' - 0"	Double, Single Hung Window	
W6	1	6' - 0"	2	6' - 0"	Double, Single Hung Window	
W6	1	6' - 0"	2	6' - 0"	Double, Single Hung Window	
W6	1	6' - 0"	2	6' - 0"	Double, Single Hung Window	
W6	1	6' - 0"	2	6' - 0"	Double, Single Hung Window	
W6	1	6' - 0"	2	6' - 0"	Double, Single Hung Window	
W6	1	6' - 0"	2	6' - 0"	Double, Single Hung Window	
W6	1	6' - 0"	2	6' - 0"	Double, Single Hung Window	
W7	1	3' - 0"	1	3' - 0"	Single, Single Hung Window	
W7	1	3' - 0"	1	3' - 0"	Single, Single Hung Window	
W7	1	3' - 0"	1	3' - 0"	Single, Single Hung Window	
W7	1	3' - 0"	1	3' - 0"	Single, Single Hung Window	
W7	1	3' - 0"	1	3' - 0"	Single, Single Hung Window	
W7	1	3' - 0"	1	3' - 0"	Single, Single Hung Window	
W7	1	3' - 0"	1	3' - 0"	Single, Single Hung Window	
W7	1	3' - 0"	1	3' - 0"	Single, Single Hung Window	
W7	1	3' - 0"	1	3' - 0"	Single, Single Hung Window	
W7	1	3' - 0"	1	3' - 0"	Single, Single Hung Window	
W7	1	3' - 0"	1	3' - 0"	Single, Single Hung Window	
W7	1	3' - 0"	1	3' - 0"	Single, Single Hung Window	
W7	1	3' - 0"	1	3' - 0"	Single, Single Hung Window	
W8	1	6' - 0"	2	3' - 0"	Double, Single Hung Window	
W8	1	6' - 0"	2	3' - 0"	Double, Single Hung Window	
W8	1	6' - 0"	2	3' - 0"	Double, Single Hung Window	
W8	1	6' - 0"	2	3' - 0"	Double, Single Hung Window	
W8	1	6' - 0"	2	3' - 0"	Double, Single Hung Window	
W8	1	6' - 0"	2	3' - 0"	Double, Single Hung Window	



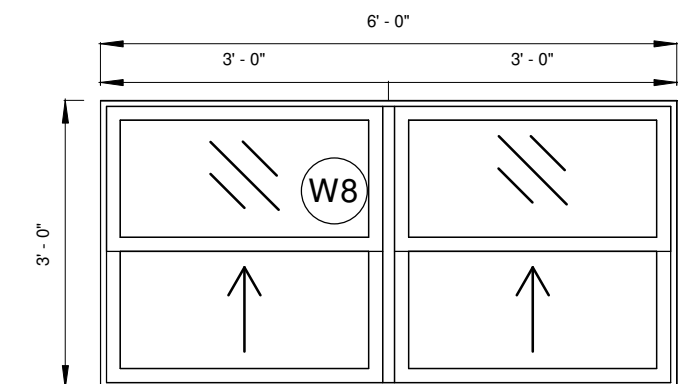
1 W5 Tripple Single Hung  
1/2" = 1'-0"



2 W6 Double Single Hung  
1/2" = 1'-0"



3 W7 Single Hung Window  
1/2" = 1'-0"

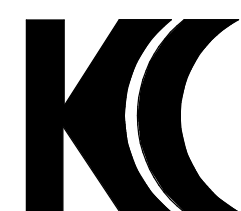


4 W8 Double Single Hung  
1/2" = 1'-0"

#### General Note:

- All Storefront & Individual Window Units are to be Impact Resistant Systems All As Described In The Particular Specifications.

- Use Kawneer "Series 8400TL" aluminum framed single hung impact resistant window units (or equal approved). Window frames to be finished with factory applied powder coat finish in a custom color to be selected by the Architect. Glazing to be medium bronze tinted 9/16" impact glass.



**K. J. CASSELL CONSULTANTS LTD** Box 313  
• Architects Geraldts  
• Engineers Montserrat  
• Project Managers 664-491-2819  
Kencassell@gmail.com

CLIENT: Financial Services Commission

PROJECT: Financial Services Commission Building

LOCATION Blk & Parcel #:14/2/39 Little Bay, Montserrat

#### REVISIONS:

1.	2.	3.	4.	5.	6.

DATE: SIGNED:

SCALE:

1/2" = 1'-0"

DATE:

05/12/2020

DESIGNED BY:

K.J. Cassell

CHECKED: DWN:

K.J.C. C.A.B

DRAWING:

Windows Details 1

ISSUE

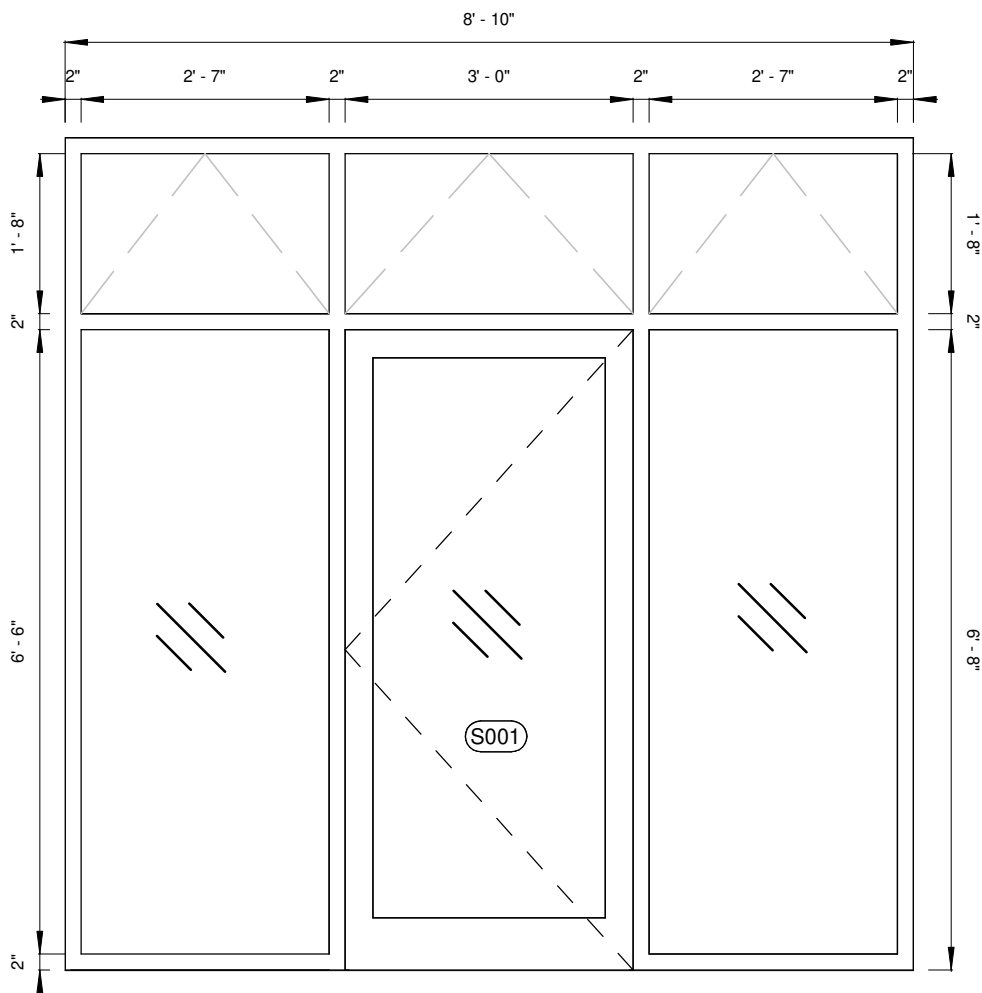
BID ISSUE-Addendum No. 02

RFF #:

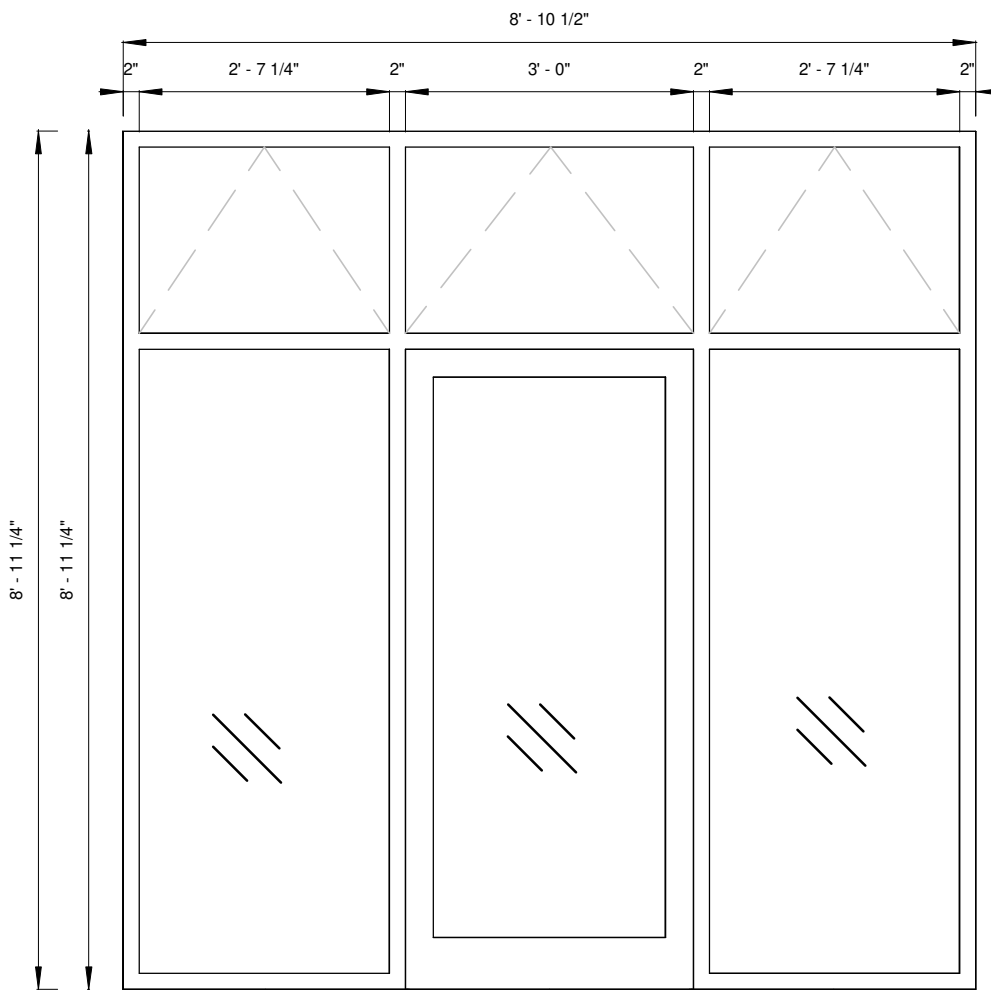
FSC

DWG#:

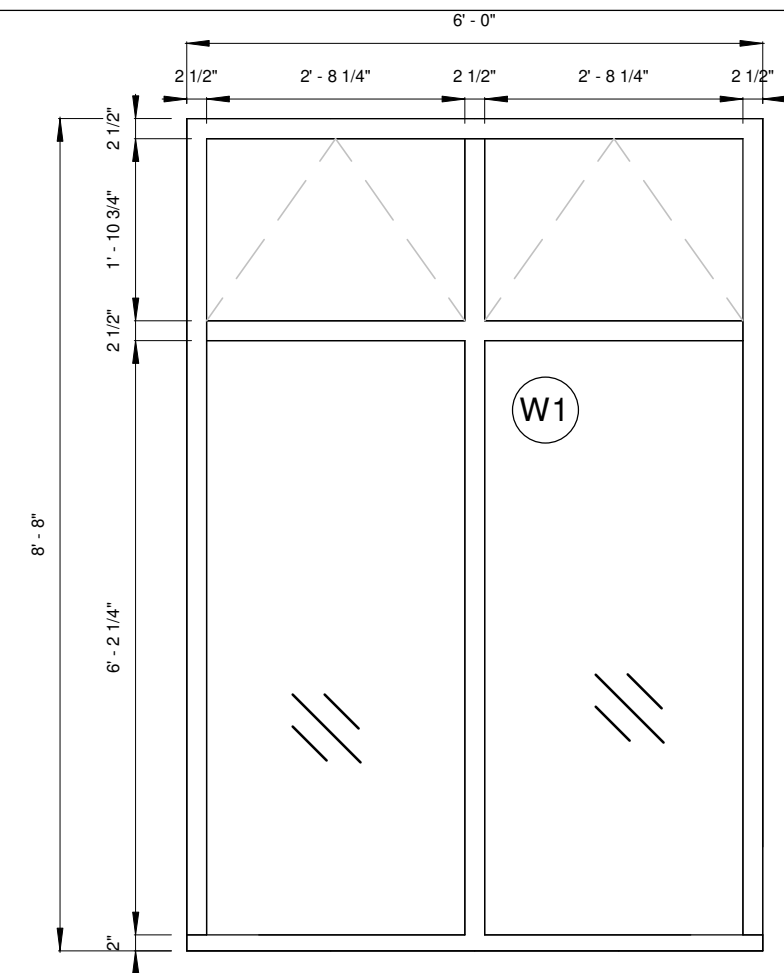
A - 14



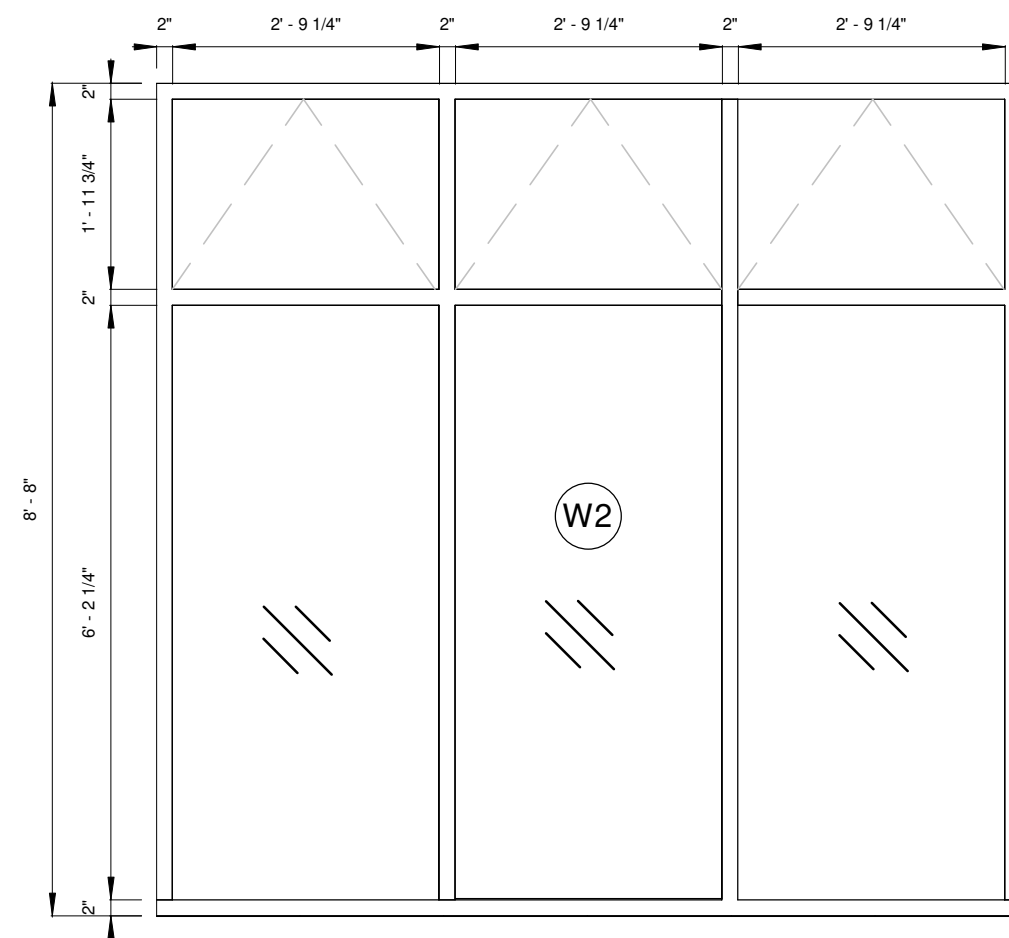
1 S001 Entrance Elevation  
1/2" = 1'-0"



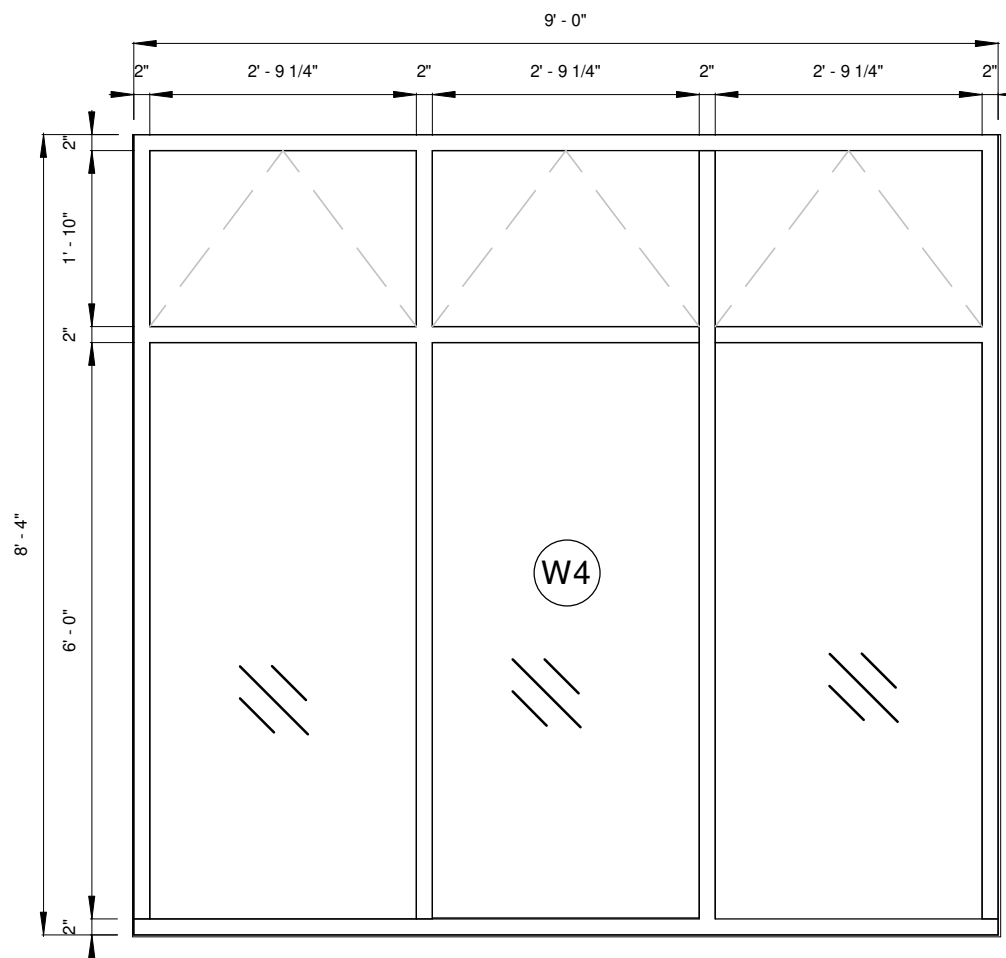
2 S101 Entrance Storefront  
1/2" = 1'-0"



3 W1 Exterior Storefront  
1/2" = 1'-0"

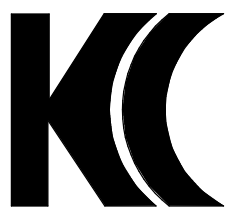


4 W2 Exterior Storefront  
1/2" = 1'-0"



6 W4 Exterior Storefront  
1/2" = 1'-0"

Notes:  
Use Kawneer "IR500" storefront framing systems with 2.5"X5" aluminum framing as detailed in these drawings and in the material specifications. Finish with factory applied powder coat finish in a custom color to be selected by the Architect. Storefronts shall have non-thermal 9/16" impact glazing,medium bronze tint, with standard square glass stops. Storefront Inserts to be GlassVent UT awning windows finished to match. Use "350 IR" entrance systems with matching finish. Entrance door hardware includes C0-12 door pulls, LCN 1260 door closers,Std. 4" thresholds & Std. butt hinges,all to be installed as shown in the door schedules and elevations.



**K. J. CASSELL CONSULTANTS LTD** Box 313  
• Architects **Geralds**  
• Engineers **Montserrat**  
• Project Managers **664-491-2819**  
**Kencassell@gmail.com**

CLIENT: Financial Services Commission  
PROJECT: Financial Services Commission Building  
LOCATION Blk & Parcel #:14/2/39 Little Bay, Montserrat

REVISIONS:		DATE:	SIGNED:
1.			
2.			
3.			
4.			
5.			
6.			

SCALE: 1/2" = 1'-0"	DESIGNED BY: K.J. Cassell	DRAWING: Exterior Store Front Deatils	RFF #: FSC
DATE: 05/12/2020	CHECKED: K.J.C.	DWN: C.A.B	DWG#: A - 14.1
ISSUE BID ISSUE-Addendum No. 02			